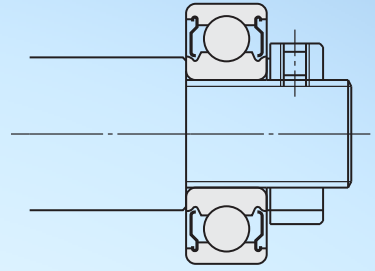
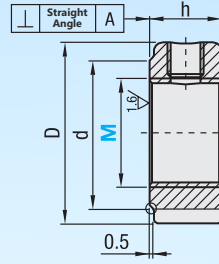
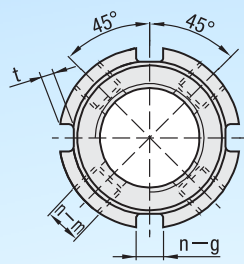


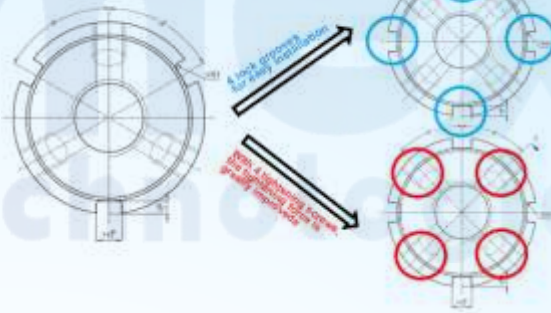
Bearing Lock Nuts R Type

DC-RM



Products Circulating On The Market
3 grooves 3 locking screws

Dymex Economic Type Products
4 grooves 4 locking screws



Type	Verticality	Type	M	Material	H	Hardness	S	Surface Treatment
DC-RM (Standard)	\perp 0.005 A	Body		SC45		28-32HRC		Phosphorous Salts Plating
		Locking Pin		Phosphor Bronze		—		—

Thread Accuracy
ISO 4H Grade

Part Number		M x Thread Pitch (Fine Thread)	D	h	t	d	n-g-m	Maximum Tightening Torque (N-m)
Type	M							
DC-RM	8	M8×0.75	16	8	1.6	13	4-3-M4	3.5
	10	M10×1.0	18			15		
	12	M12×1.0	20			17		
	15	M15×1.0	25			21.5		
	16	M16×1.5	28	10	2	24	4-3-M4	4.5
	17	M17×1.0				28		
	20	M20×1.0				32		
	25	M25×1.5	38	12	2	34	4-3-M4	8
	27	M27×1.5	42			38		
	30	M30×1.5	45			41		
	33	M33×1.5	52			48		
	35	M35×1.5		52	14	2.5	53	4-3-M4
	40	M40×1.5		58			60	
	45	M45×1.5	65	65				
	50	M50×1.5	70	16	3	69	4-3-M4	18
	55	M55×2.0	75			74		
60	M60×2.0	80	74					

Basic Specifications

- **Type** - Lock Nut
- **Surface Treatment** - Phosphate Conversion Coating
- **Shape** - Round Shape
- **Screw Type** - Metric (Fine) Thread
- **Material** - S45C

ORDERING GUIDE



DC-RM10